



DEA No. RA0571996
FL License # CMTL-0003
CLIA No. 10D1094068

Certificate of Analysis

Compliance Test

White Label Leaf
6205 John's Road
STE 9
Tampa, Florida 33634

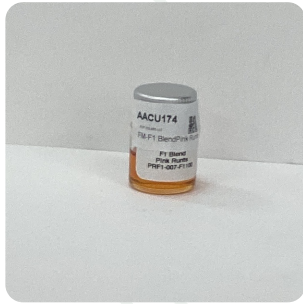
Batch # FM-F1 Blend- Pink Runts
Batch Date: 2022-05-04
Extracted From: Hemp

Test Reg State: Florida

Order # PUR220504-050001
Order Date: 2022-05-04
Sample # AACU174

Sampling Date: 2022-05-05
Lab Batch Date: 2022-05-05
Completion Date: 2022-05-10

Initial Gross Weight: 10.267 g



Potency
Tested

HHC
Tested

Product Image

Potency 21 (LCUV)
Specimen Weight: 49.460 mg

| Analyte | Dilution (1:n) | LOD (%) | LOQ (%) | Result (mg/g) | (%) |
|-----------------------|----------------|----------|---------|---------------|---------|
| Delta-8 THC-O Acetate | 1000.000 | 0.000027 | 0.0003 | 173.1000 | 17.3100 |
| CBD | 1000.000 | 0.000054 | 0.0015 | 114.5000 | 11.4500 |
| Delta-8 THC | 10.000 | 0.000026 | 0.0015 | 7.1540 | 0.7154 |
| Delta-9 THC-O Acetate | 10.000 | 0.000077 | 0.0003 | 3.7270 | 0.3727 |
| CBN | 10.000 | 0.000014 | 0.0015 | 2.9660 | 0.2966 |
| THCV | 10.000 | 0.000007 | 0.0015 | 1.3770 | 0.1377 |
| THCA | 10.000 | 0.000032 | 0.0015 | <LOQ | <LOQ |
| THCVA | 10.000 | 0.000047 | 0.0015 | <LOQ | <LOQ |
| CBC | 100.000 | 0.000018 | 0.0015 | <LOQ | <LOQ |
| Exo-THC | 10.000 | 0.00023 | 0.0015 | <LOQ | <LOQ |
| CBCA | 10.000 | 0.000107 | 0.0015 | <LOQ | <LOQ |
| Delta-8 THCV | 10.000 | 0.00004 | 0.0015 | <LOQ | <LOQ |
| CBT | 10.000 | 0.0002 | 0.0015 | <LOQ | <LOQ |
| CBNA | 10.000 | 0.000095 | 0.0015 | <LOQ | <LOQ |
| CBL | 10.000 | 0.000035 | 0.0015 | <LOQ | <LOQ |
| CBGA | 10.000 | 0.00008 | 0.0015 | <LOQ | <LOQ |
| CBG | 10.000 | 0.000248 | 0.0015 | <LOQ | <LOQ |
| CBDVA | 10.000 | 0.000014 | 0.0015 | <LOQ | <LOQ |
| CBDV | 10.000 | 0.000065 | 0.0015 | <LOQ | <LOQ |
| CBDA | 10.000 | 0.00001 | 0.0015 | <LOQ | <LOQ |
| Delta-9 THC | 10.000 | 0.000013 | 0.0015 | <LOQ | <LOQ |

Tested (LCUV)

Potency Summary

| | |
|-------------------------------|-------------------------------|
| Total THC None Detected | Total CBD 11.450% |
| Total CBG None Detected | Total CBN 0.297% |
| Other Cannabinoids 18.536% | Total Cannabinoids 30.282% |

HHC Summary

| Analyte | Result (mg/g) | (%) | Total/Unit (mg) |
|-----------|---------------|---------|-----------------|
| Total HHC | 409.16 | 40.916% | 0.00000 |

Xueli Gao
Ph.D., DABT
Lab Toxicologist

Aixia Sun
D.H.Sc., M.Sc., B.Sc., MT (AAB)
Lab Director/Principal Scientist



Definitions and Abbreviations used in this report: *Total CBD = CBD + (CBD-A * 0.877), *Total CBDV = CBDV + (CBDVA * 0.87), *Total THC = THCA-A * 0.877 + Delta 9 THC, *Total THCV = THCV + (THCVA * 0.87), *CBG Total = (CBGA * 0.877) + CBG, *CBN Total = (CBNA * 0.877) + CBN, *Total CBC = CBC + (CBCA * 0.877), *Total THC-O-Acetate = Delta 8 THC-O-Acetate + Delta 9 THC-O-Acetate, *Other Cannabinoids Total = Total Cannabinoids - All the listed cannabinoids on the summary section, *Total Detected Cannabinoids = Delta6a10a-THC + Delta8-THC + Total CBN + CBT + Delta8-THCV + Total CBG + Total CBD + Total THCV + CBL + Total THC + Total CBC + Total CBDV + Delta10-THC + Total THC-O-Acetate, *Analyte Details above show the Dry Weight Concentrations unless specified as 12% moisture concentration. (mg/ml) = Milligrams per Milliliter, LOQ = Limit of Quantitation, LOD = Limit of Detection, Dilution = Dilution Factor (ppb) = Parts per Billion, (%) = Percent, (cfu/g) = Colony Forming Unit per Gram (cfu/g) = Colony Forming Unit per Gram, , LOD = Limit of Detection, (µg/g) = Microgram per Gram (ppm) = Parts per Million, (ppm) = (µg/g), (aw) = aw (area ratio) = Area Ratio, (mg/Kg) = Milligram per Kilogram, *Measurement of Uncertainty = +/- 10%



This report shall not be reproduced, without written approval, from ACS Laboratory. The results of this report relate only to the material or product analyzed. Test results are confidential unless explicitly waived otherwise. Accredited by a third-party accrediting body as a competent testing laboratory pursuant to ISO/IEC 17025 of the International Organization for Standardization.



DEA No. RA0571996
FL License # CMTL-0003
CLIA No. 10D1094068

Certificate of Analysis

Compliance Test

White Label Leaf
6205 John's Road
STE 9
Tampa, Florida 33634

Batch # FM-F1 Blend- Pink Runts
Batch Date: 2022-05-04
Extracted From: Hemp

Test Reg State: Florida

Order # PUR220504-050001
Order Date: 2022-05-04
Sample # AACU174

Sampling Date: 2022-05-05
Lab Batch Date: 2022-05-05
Completion Date: 2022-05-10

Initial Gross Weight: 10.267 g

HHC
Specimen Weight: 49.460 mg
Dilution Factor: 1.000

Tested
(LCMS)

| Analyte | LOQ (%) | Result (mg/g) | (%) | Analyte | LOQ (%) | Result (mg/g) | (%) |
|----------|---------|---------------|------|--------------------|---------|---------------|--------|
| (9R)-HHC | 7.5E-5 | 96.6000 | 9.66 | (±)-9β-hydroxy-HHC | 7.5E-5 | 1.5600 | 0.156 |
| (9S)-HHC | 7.5E-5 | 311.0000 | 31.1 | Total HHC | 7.5E-5 | 409.1600 | 40.916 |

Xueli Gao
Xueli Gao
Ph.D., DABT
Lab Toxicologist

Aixia Sun
Aixia Sun
D.H.Sc., M.Sc., B.Sc., MT (AAB)
Lab Director/Principal Scientist



Definitions and Abbreviations used in this report: *Total CBD = CBD + (CBD-A * 0.877), *Total CBDV = CBDV + (CBDVA * 0.87), *Total THC = THCA-A * 0.877 + Delta 9 THC, *Total THCV = THCV + (THCVA * 0.87), *CBG Total = (CBGA * 0.877) + CBG, *CBN Total = (CBNA * 0.877) + CBN, *Total CBC = CBC + (CBCA * 0.877), *Total THC-O-Acetate = Delta 8 THC-O-Acetate + Delta 9 THC-O-Acetate, *Other Cannabinoids Total = Total Cannabinoids - All the listed cannabinoids on the summary section, *Total Detected Cannabinoids = Delta6a10a-THC + Delta8-THC + Total CBN + CBT + Delta8-THCV + Total CBG + Total CBD + Total THCV + CBL + Total THC + Total CBC + Total CBDV + Delta10-THC + Total THC-O-Acetate, *Analyte Details above show the Dry Weight Concentrations unless specified as 12% moisture concentration. (mg/ml) = Milligrams per Milliliter, LOQ = Limit of Quantitation, LOD = Limit of Detection, Dilution = Dilution Factor (ppb) = Parts per Billion, (%) = Percent, (cfu/g) = Colony Forming Unit per Gram (cfu/g) = Colony Forming Unit per Gram, LOD = Limit of Detection, (µg/g) = Microgram per Gram (ppm) = Parts per Million, (ppm) = (µg/g), (aw) = aw (area ratio) = Area Ratio, (mg/Kg) = Milligram per Kilogram, *Measurement of Uncertainty = +/- 10%

This report shall not be reproduced, without written approval, from ACS Laboratory. The results of this report relate only to the material or product analyzed. Test results are confidential unless explicitly waived otherwise. Accredited by a third-party accrediting body as a competent testing laboratory pursuant to ISO/IEC 17025 of the International Organization for Standardization.